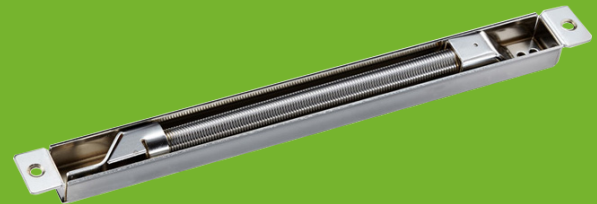


Concealed Door Loop Electrical Power Transfer



DL-37

What is concealed door loop?

Concealed door loop, Whereas typical door loops are surface mounted and remain constantly visible, the Concealed Door Loop slides into the door and/or frame completely concealing itself when the door is closed. ... The Concealed Door Loops aesthetic appeal will benefit retrofits and new installations alike.

Specifications

S4A Model No.	DL-37	Standard Structure	Alloy Material, Thickened Ripple Tube
Wire diameter	10mm	Finish For Shell	Painted by high temperature
Inner Diameter	Support 2pcs 6mm cat6 wires	Installation	Mortise Mounting
Dimension	294x24x21mm	Usage	Prevent the wire from malicious damage

Dimensions

